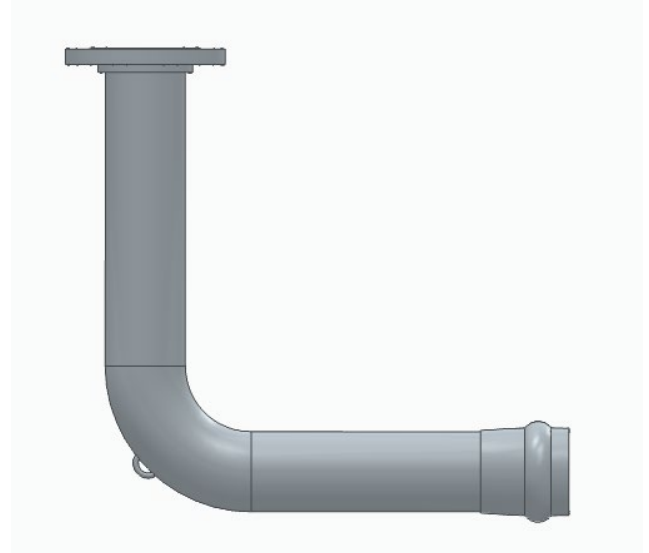




## Features

- Sizes Available 2½", 3", 4", 6", 8", 10", and 12"
- Sizes 4" and 6" no welds under foundation
- **Special lengths made to order – Manufactured within 3 to 5 days**
- Available in Flanged or Grooved
- Includes cap and coupling
- UL Listed from 24 inches to 20 feet in length
- UL EX16200 rated 200 PSI
- Light weight 304 Stainless Steel Sch 10
- AWWA C900 Inlet – available 4", 6", and 8"
- Flanged inlet – available 2½", 3", 4", 6", 8", 10", and 12"
- Lead free



Texline risers are used to connect the main fire supply to the building overhead fire system. The fitting passes under the foundation without joints and extends up through the floor. The unit has a CIPS coupler that connects to the underground supply with either AWWA C900 PVC or Ductile Iron Pipe. Texline risers come either AWWA C-606 grooved or AWWA C-207 flanged ends.

### Standards Met:

NFPA – Designed to allow the contractor to conform to NFPA 24 Section 8-3.2

### End Connections:

Horizontal End: Mates with Ductile Iron Pipe and AWWA C900 Pipe (PVC Pipe with Ductile Iron Pipe Equivalent OD's) or AWWA C-207 flanged ends

### Vertical End:

Meets AWWA C-606 dimensions for roll grooved pipe or AWWA C-207 flanged ends

Call our sales department at 903.564.3554 Monday through Friday from 7 AM to 5 PM Central Time or email [sales@texline.com](mailto:sales@texline.com)

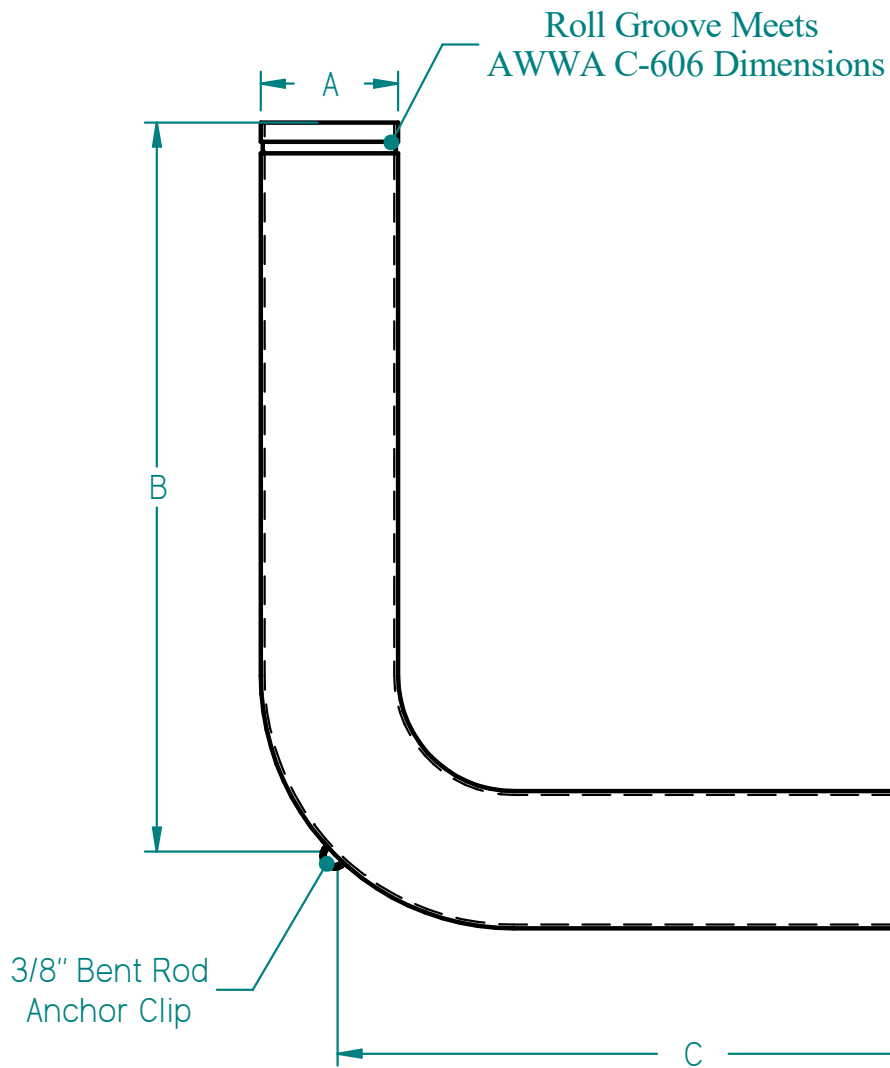


26449 State Highway 56  
Whitesboro, Texas 76273

Phone: 903.564.3554

FAX: 903.564.3189

[www.texline.com](http://www.texline.com)



SIZE	A	B	C
12"	12.75	24 - 240	24 - 240
10"	10.75	24 - 240	24 - 240
8"	8.625	24 - 240	24 - 240
6"	6.625	24 - 240	24 - 240
4"	4.5	24 - 240	24 - 240
3"	3.5	24 - 240	24 - 240
2½"	2.875	24 - 240	24 - 240

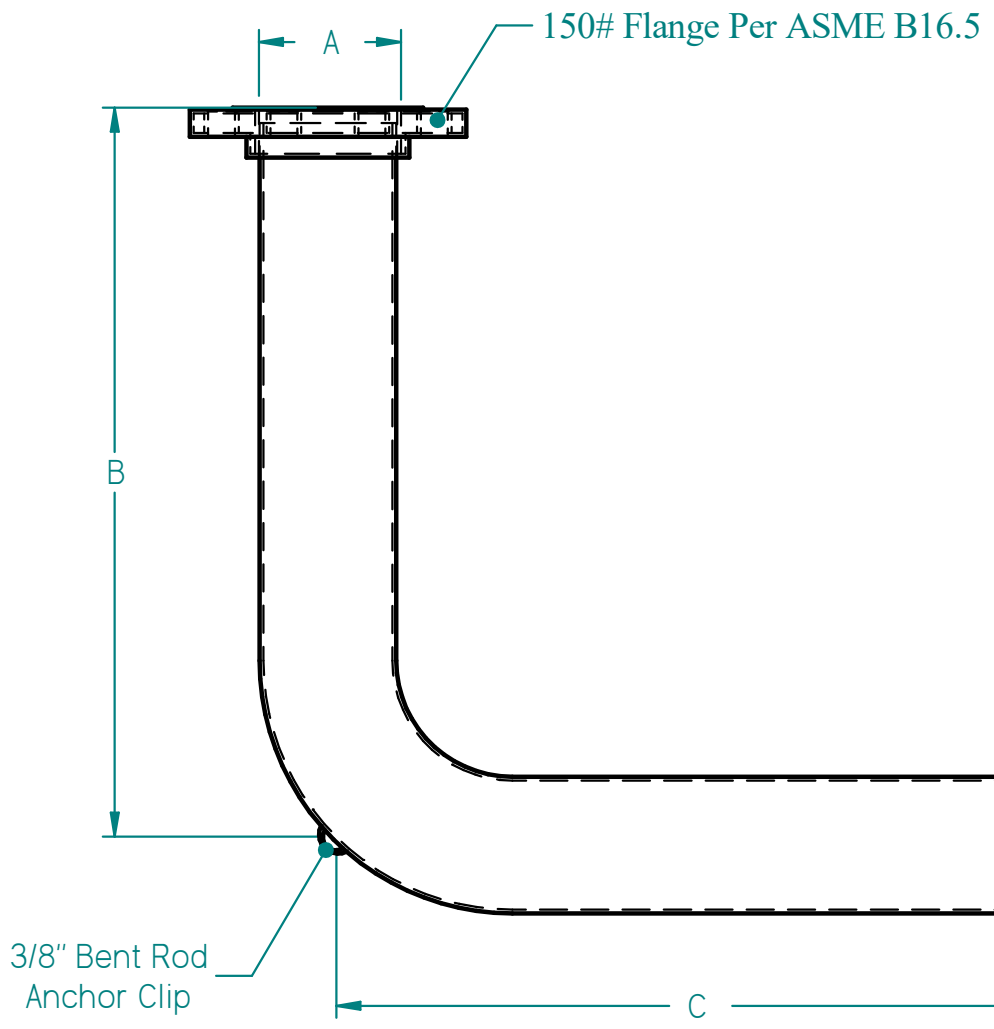
150# Flange Per ASME B16.5

3/8" Bent Rod Anchor Clip



MATERIAL: TYPE 304 STAINLESS STEEL SCH10 OR SCH40

DATE	3/7/2024	TITLE	
DRAWN	J.Aycox	Groove by Flange Spigot Assembly	
UNLESS OTHERWISE SPECIFIED DIMENSIONS ARE IN INCHES ANGLES ±X.X° 2 PL ±X.XX 3 PL ±X.XXX	SIZE	DWG NO	REV
	A	GVFGSPIG	I
	FILE NAME: GVFGSPIG.dft		
SCALE:	WEIGHT:	SHEET 1 OF 1	



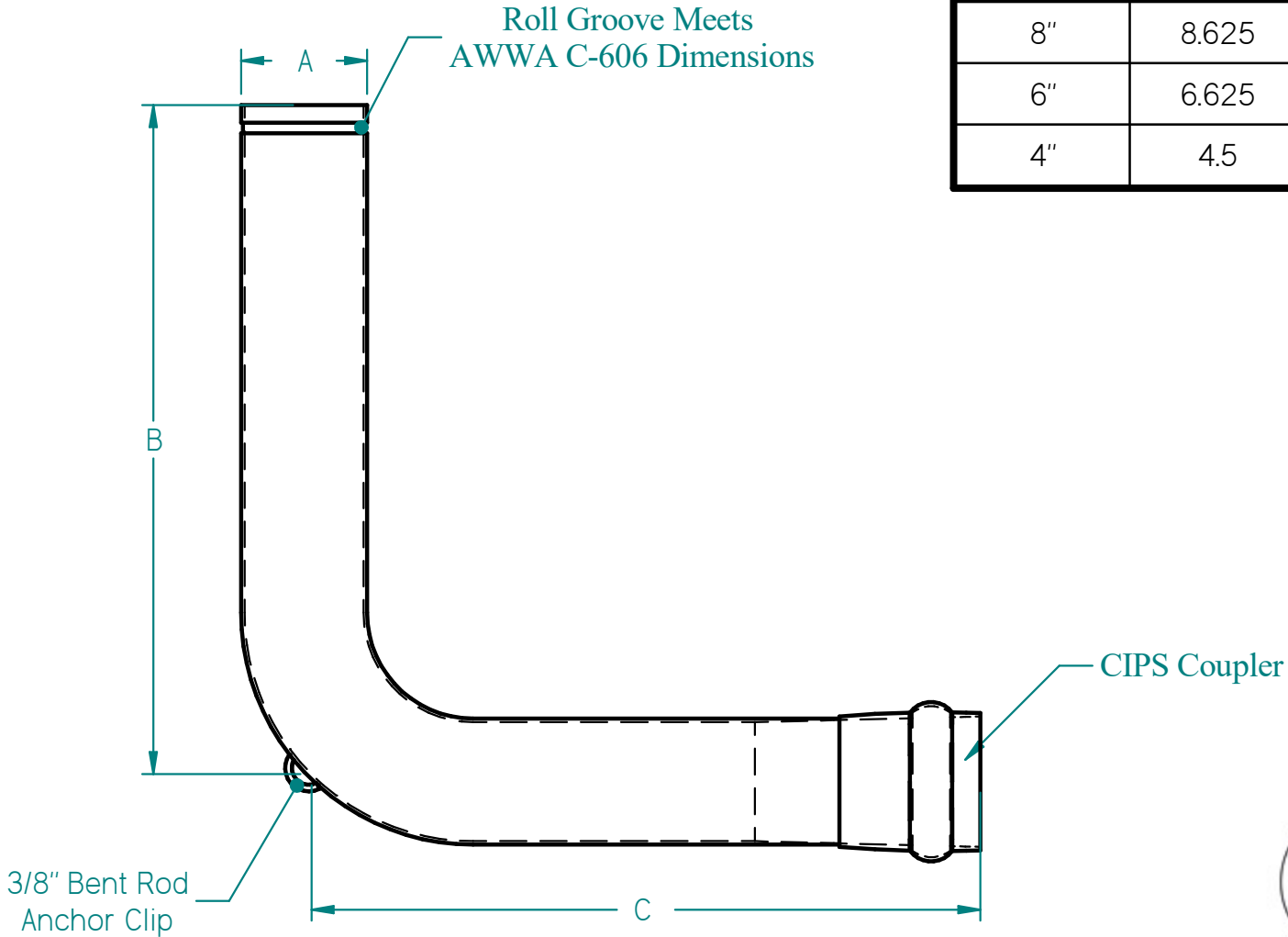
SIZE	A	B	C
12"	12.75	24 - 240	24 - 240
10"	10.75	24 - 240	24 - 240
8"	8.625	24 - 240	24 - 240
6"	6.625	24 - 240	24 - 240
4"	4.5	24 - 240	24 - 240
3"	3.5	24 - 240	24 - 240
2½"	2.875	24 - 240	24 - 240

MATERIAL: TYPE 304 STAINLESS STEEL SCH10 OR SCH40



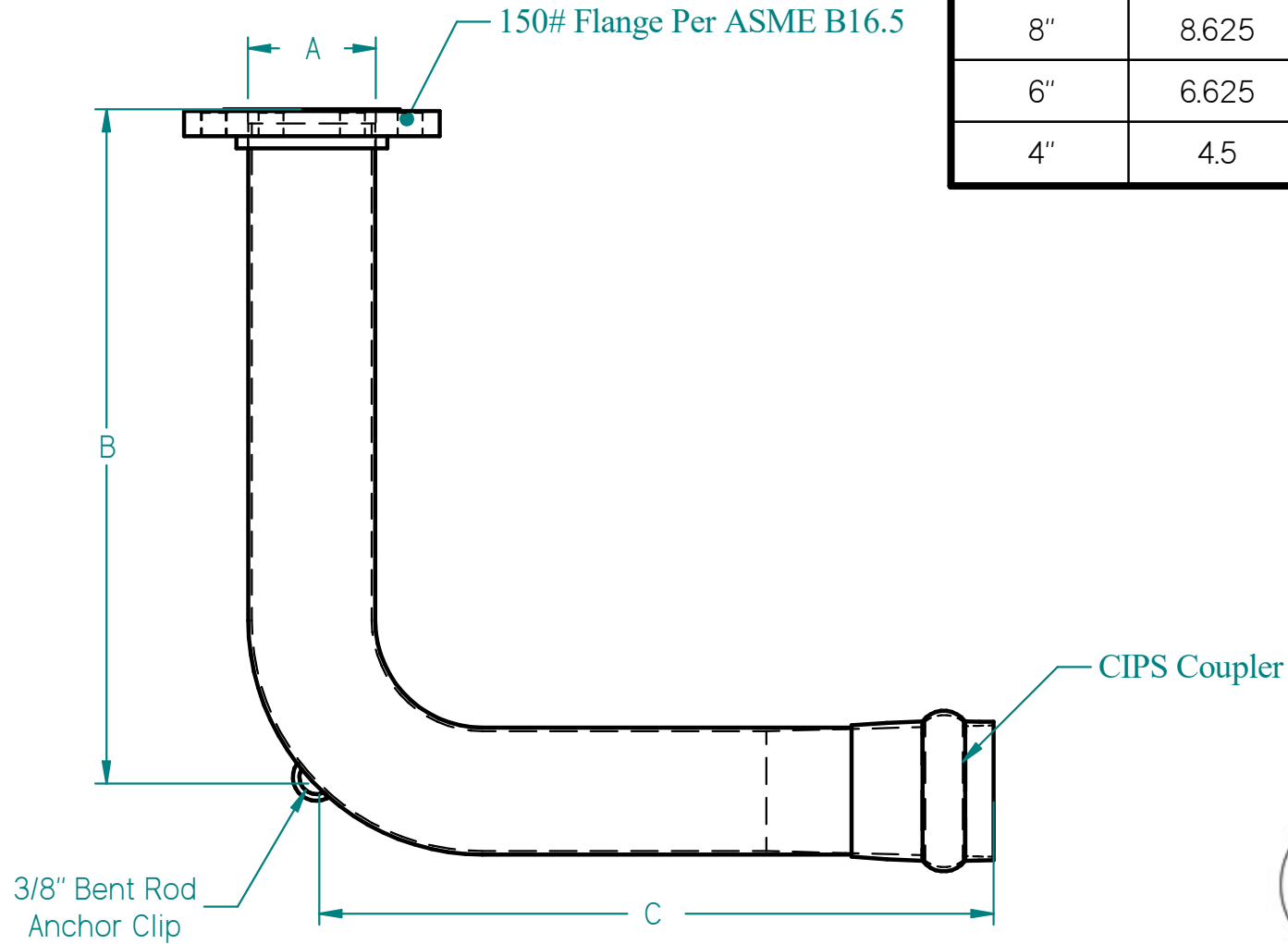
DATE	3/7/2024		TITLE	Flange by Flange Spigot Assembly	
DRAWN	J.Aycox		SIZE	DWG NO	REV
UNLESS OTHERWISE SPECIFIED DIMENSIONS ARE IN INCHES ANGLES ±X.X° 2 PL ±X.XX 3 PL ±X.XXX			A	FGFGSPIG	I
			FILE NAME: FGFGSPIG.dft		
SCALE:		WEIGHT:		SHEET 1 OF 1	

SIZE	A	B	C
8"	8.625	24 - 240	24 - 240
6"	6.625	24 - 240	24 - 240
4"	4.5	24 - 240	24 - 240



MATERIAL: TYPE 304 STAINLESS STEEL SCH10 OR SCH40

DATE	3/7/2024	TITLE		CIPS by Groove Spigot Assembly
DRAWN	J.Aycox	SIZE		REV
UNLESS OTHERWISE SPECIFIED DIMENSIONS ARE IN INCHES ANGLES ±X.X° 2 PL ±X.XX 3 PL ±X.XXX		A	DWG NO	I
		CIPSGVSPIG		
		FILE NAME: CIPSGVSPIG.dft		
		SCALE:	WEIGHT:	SHEET 1 OF 1



SIZE	A	B	C
8"	8.625	24 - 240	24 - 240
6"	6.625	24 - 240	24 - 240
4"	4.5	24 - 240	24 - 240

MATERIAL: TYPE 304 STAINLESS STEEL SCH10 OR SCH40



DATE	3/7/2024		TITLE	CIPS by Flange Spigot Assembly	
DRAWN	J.Aycox		SIZE	DWG NO	REV
UNLESS OTHERWISE SPECIFIED DIMENSIONS ARE IN INCHES ANGLES ±X.X° 2 PL ±X.XX 3 PL ±X.XXX			A	CIPSGSPIG	I
			FILE NAME: CIPSGSPIG.dft		
SCALE:		WEIGHT:	SHEET 1 OF 1		